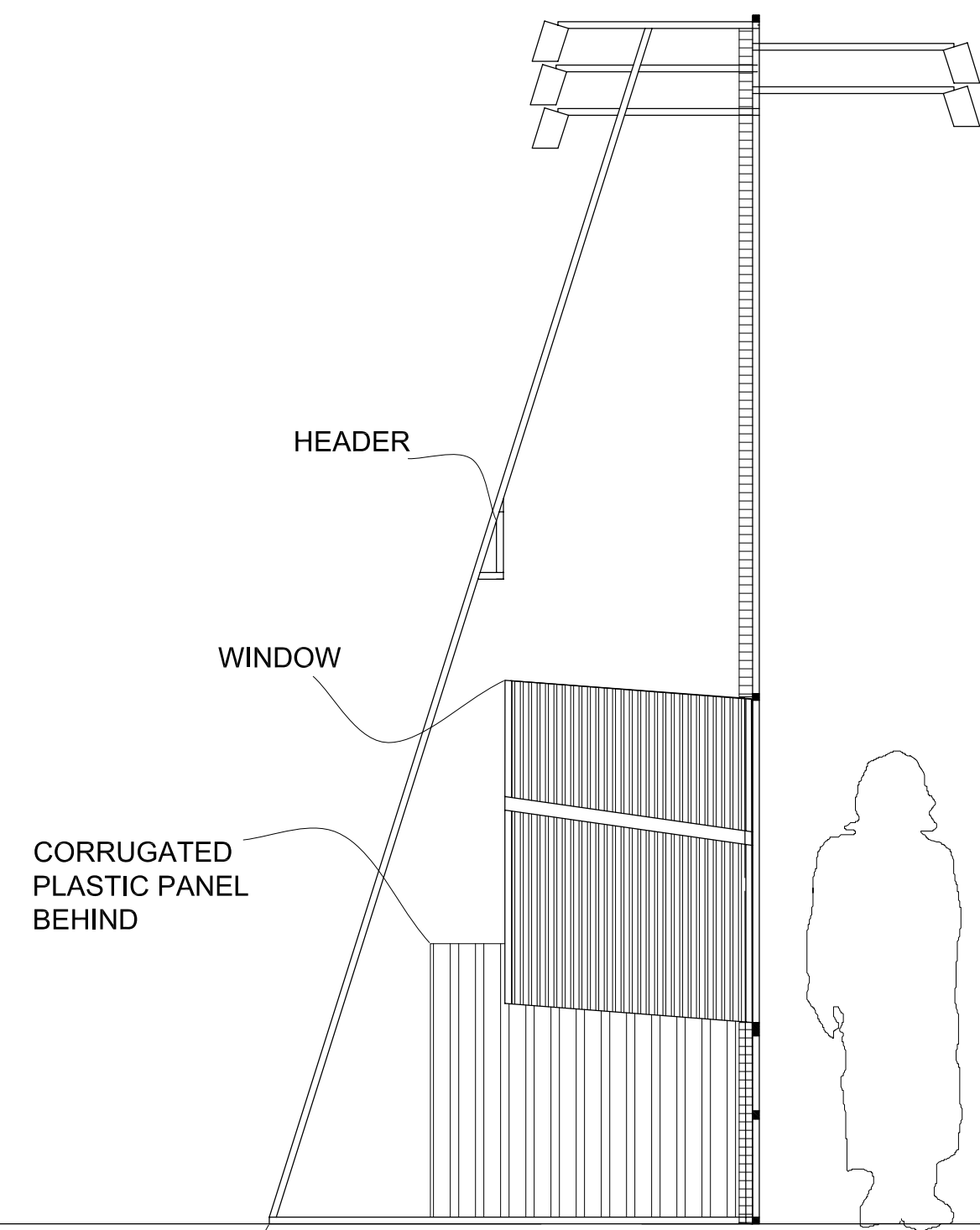
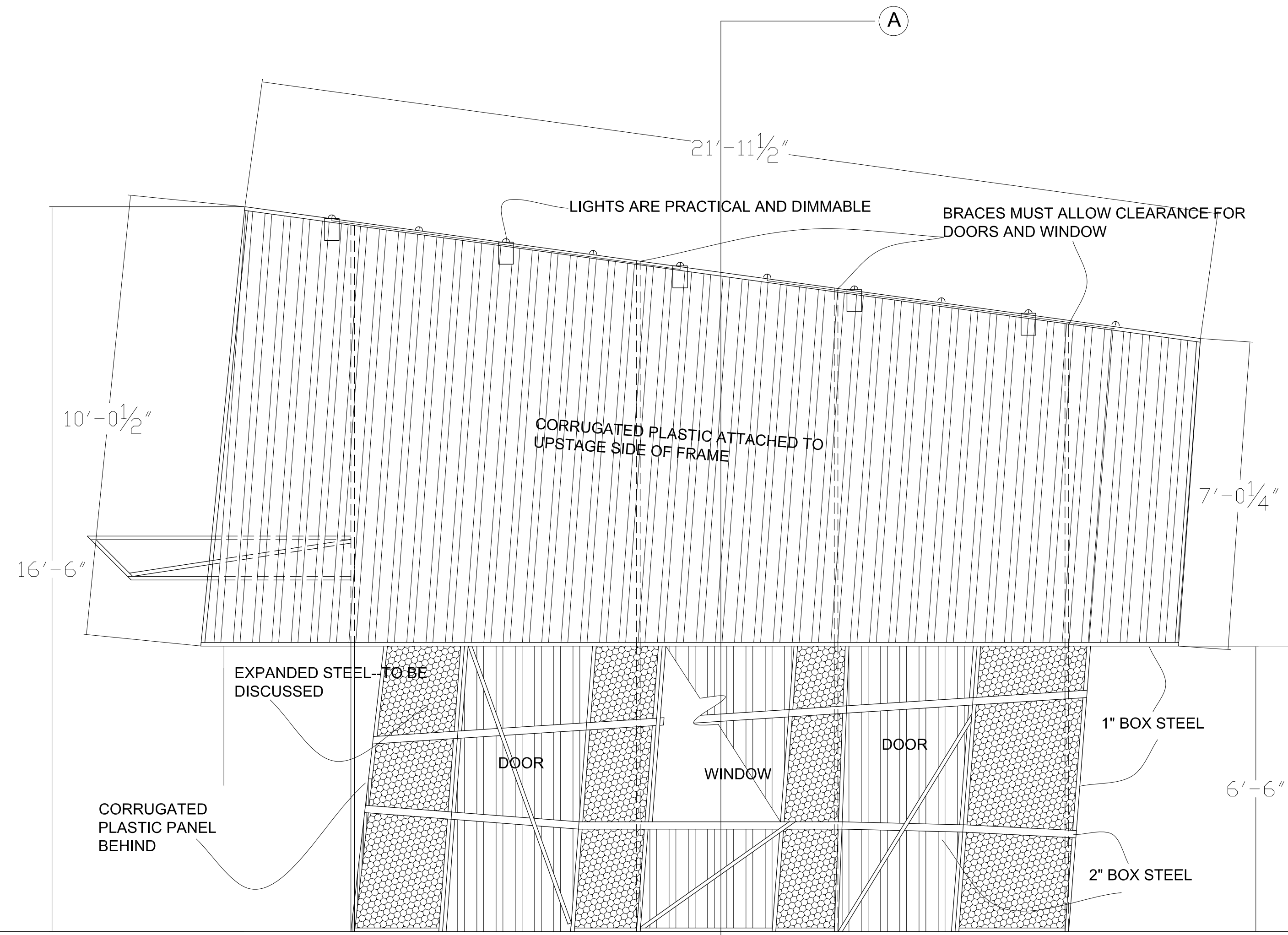


SCREEN

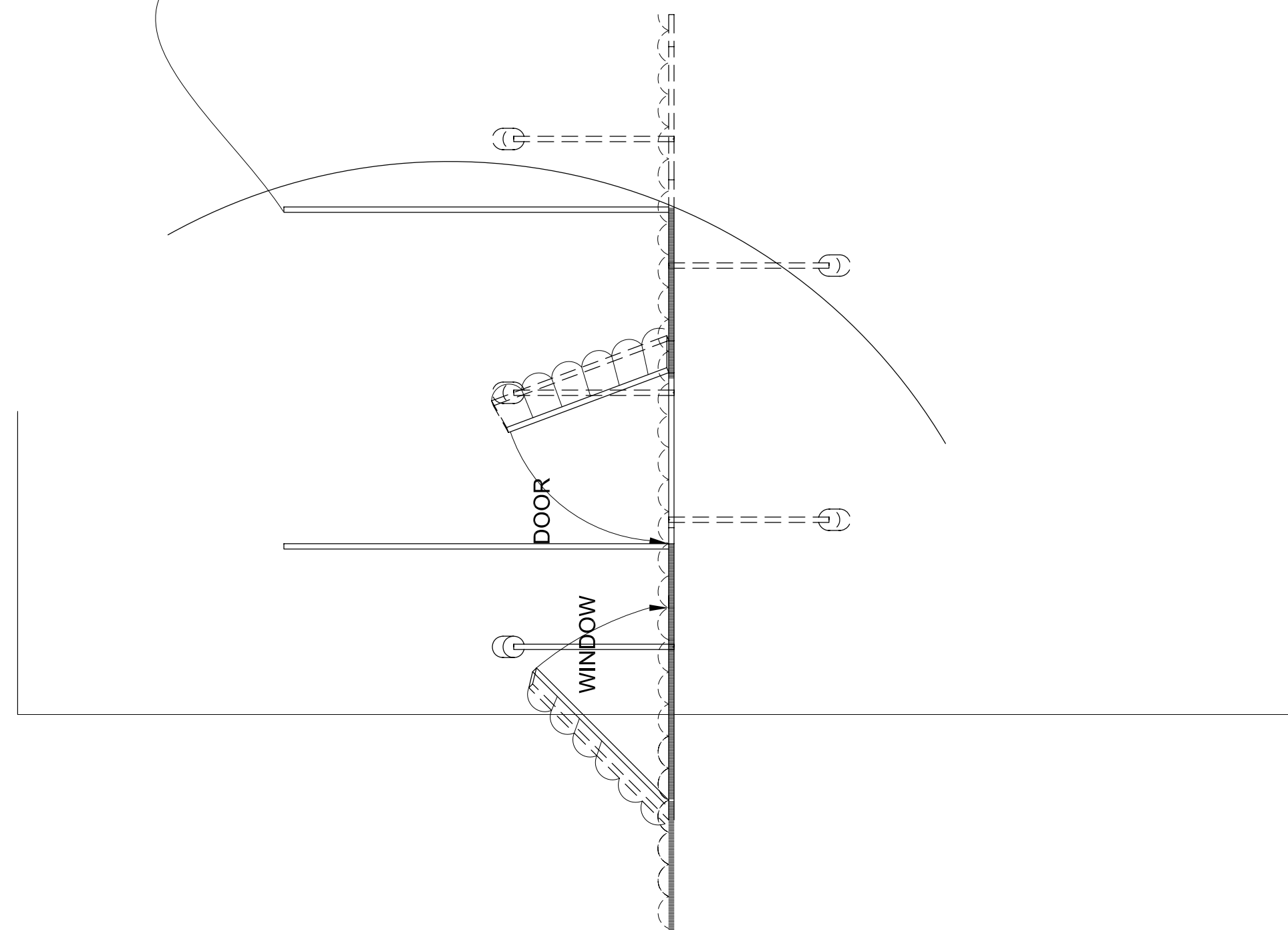
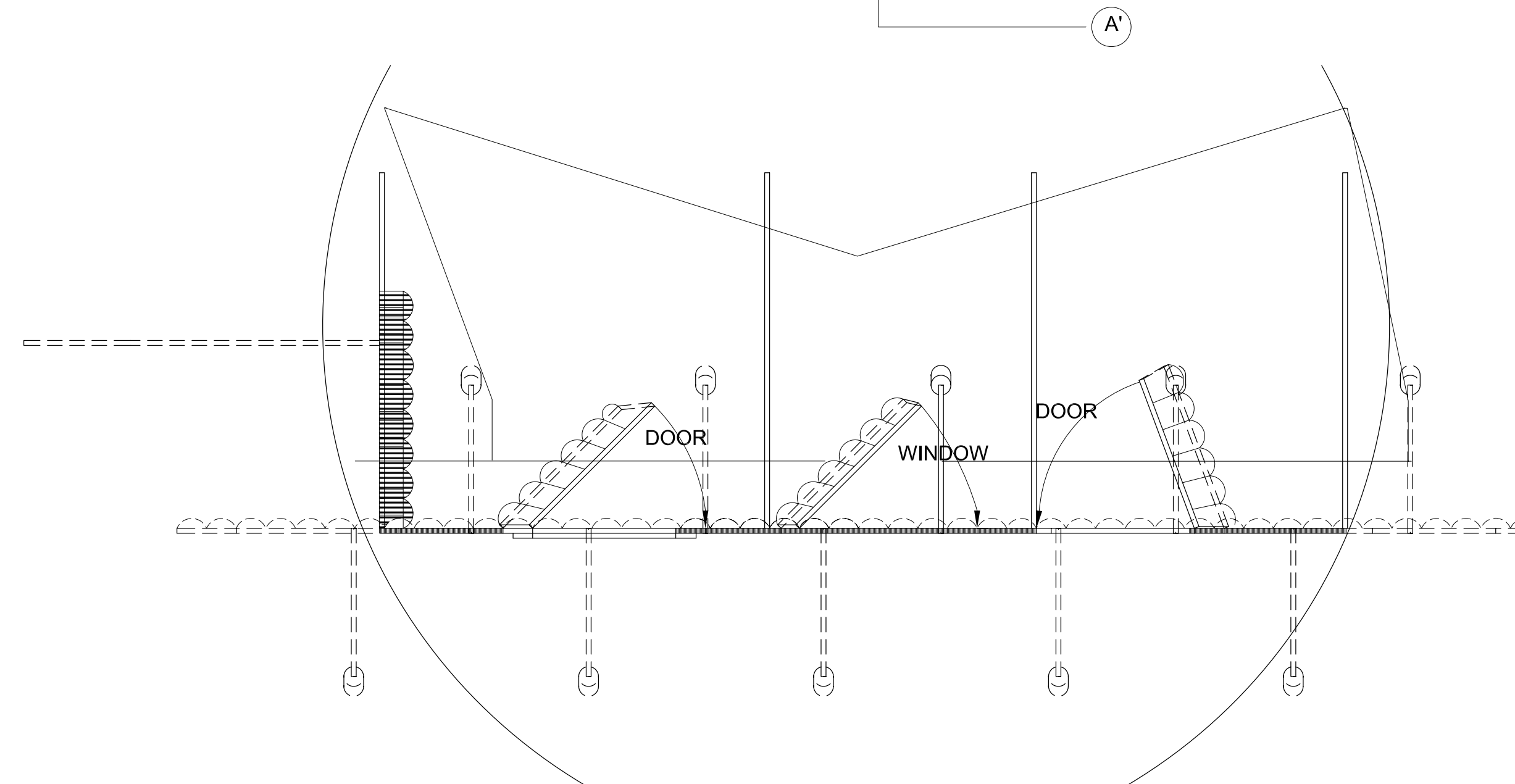
SECTION A-A'



NOTE: RUN CABLE INSIDE OR OUTSIDE BOX STEEL. TBD.



NOTE: ON THE TWO MIDDLE SUPPORT BRACES, THE DIAGONAL MEMBER SHOULD BE BOLTED DIRECTLY TO THE DECK. DO NOT INSTALL A PIECE OF STEEL THAT RUNS ALONG THE FLOOR AS IN THE OUTSIDE TWO BRACES. MINIMIZE TRIP HAZARDS.



GENERAL NOTES:

- ALL SCENERY ON THE OUTER TURNTABLE MUST BE SELF-SUPPORTING AND MOVABLE.
- ALL SCENERY WILL BE SEEN FROM BOTH SIDES AND MUST BE FINISHED OUT ACCORDINGLY.
- DESIGNER IS NOT QUALIFIED TO DETERMINE IF STRUCTURES ARE SOUND.

SCHOOL OF THEATER OHIO UNIVERSITY 307 Kautner Hall Athens, OH 45701 (740) 593-4818		ELIZABETH EVANS BAKER THEATER	
SHOW TITLE: THE MINEOLA TWINS		DATES: WINTER 2005	
DWG: SCREEN	PLATE 3 Of: 6	PRODUCTION DESIGN & TECHNOLOGY Original on AutoCad by: RSL	
DIRECTED BY: WILLIAM FISHER	DRAFTED BY: NKT		
SCENERY DESIGN: NATALIE TAYLOR	DATE: 1.24.05		
COSTUME DESIGN: EMILIA CORBIN	APPROVED BY:		
LIGHTING DESIGN: DUSTIN EFIRD			
SOUND DESIGN: KARL KERN			
ASSISTANT DESIGNER: LIZA KINDL	Scale: 1/2"=1'-0"		
TECHNICAL DIRECTOR: DEAN ADAMS			